

2012 INHA UNIVERSITY SUMMER SCHOOL

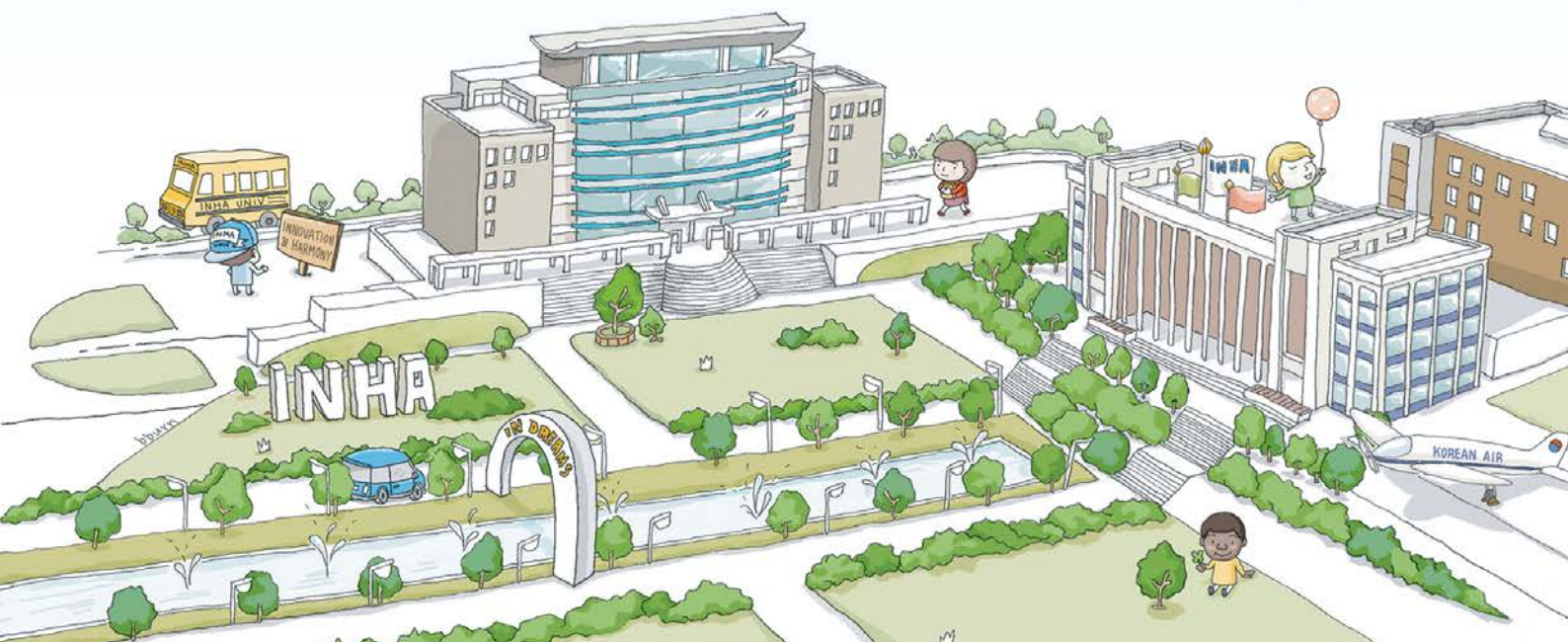
July 30, 2012 ~ August 17, 2012

Inha University annually offers a Summer School program as a part of its devotion to a more enhanced global education. The summer program was first initiated in 2004 to provide overseas college students with hands-on opportunities to learn the Korean language and experience the cultural and academic life in Korea. Since then, the program has continued to develop and be enriched with more unique and diverse activities, while attracting more participants every year.

This short term, intensive program mainly consists of class room lectures, visits to corporate sites, cultural sessions and field trips to cultural and historic places in general. Through the coursework, international students will have opportunities to better understand the dynamic aspects of the past, present and future of the Korean society.

One of the most important and engaging aspects of these programs is that the learning is not limited to the class room. Many field trip locations themselves become "living textbooks" for international students, who are eager to gain real world experiences on traditional and modern Korean culture. Throughout the program, international students will enjoy many chances to meet and interact with Korean students, and an opportunity will be given to make a presentation to share their experiences and views with each other. At the end of the program, participants will receive certificates of completion.

In order to meet the increasing demands for learning Korean, Inha now offers an intensive language course as a part of the program. In addition to the language class, many other courses will be available, including East Asian Politics and Int'l Relations, Korean Society and Politics in the Films, Introduction to Korean Business & Economy, Intercultural Communication and Modern Technologies for the Future etc. These courses will cover theories on the introductory level, present diverse aspects in the chosen fields and include site visits to various off-campus places. The fields and scopes of the courses will continue to expand reflecting demands from students and the global community.



"All in all, my experience at Inha Summer School has been one I will never forget. I have met and made friends with more people from many different countries and backgrounds than I expected. I have truly enjoyed every minute of my time here. I would definitely recommend this program to anyone!"

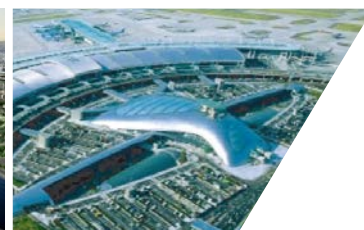
– Anna Bridges, a student from the University of Cumbria, U. K.



Inha University is one of the most prestigious private universities in Korea, and has been continually ranked as a top 10 college nationwide. Since its foundation as an engineering institute in 1954, the university has sustained a strong tradition of academic integrity and gained a reputation for excellent educational programs and research in the fields of science and technology, and across a broader academic spectrum including IT, social sciences, business, global logistics, education, law, fine arts, humanities and medicine. Motivated by the strong support and investment from Hanjin Group, which controls the foundation along with Korean Air, Inha University continues to reinvent itself to achieve its goal of enhancing pragmatic education, practical research and globalization. Inha's vision continues with its grand project of building a global campus in New Songdo City, a newly emerging international business and R&D hub city in northeast Asia.



With over 2.8 million people, Incheon is one of the largest cities in Korea in terms of population. A gateway to northeast Asia with international airport and international sea port in its hand, Incheon is located in mid west Korean peninsula abutting the Yellow Sea. Incheon is an intensely dynamic city bursting with rapid cultural and economic change, and it is now transforming into a global business hub centered around the high tech and futuristic New Songdo City, which is designated to become a center of diverse international businesses and trade.

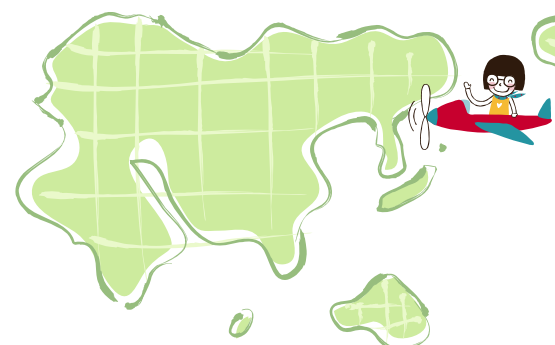


Size and Location

- The third largest city in Korea with a population of 2.8 million
- Situated on the west coast, 30 km from Seoul
- China town, piers, neighboring islands, shopping malls, museums, movie complexes and parks

Clothing & Culture

- Korea has definite four seasons with a wet monsoon summer.
- The average temperature in August is around 26 degrees Celsius.





Why should you participate in Inha Summer School?

Experience Korea's Leading University

This is an exciting opportunity to be part of one of the top universities in Korea and earn credits towards a degree at your home university in only three weeks. Inha University has world class facilities including libraries, student center and dormitory.

Immersion with Korean Students

Inha University has close to 22,000 students. All summer school participants will have Korean buddies who will help them to learn about Korean culture and practice Korean.

Wide Variety of Unique Courses Available

Students will have a variety of options to choose unique courses to learn Korea and its culture.

Support and Guidance

Students will have access to support staff in the dormitory and the International Center as well as academic and other counseling services.

Vibrant City

Students will have lots of time to experience Incheon metropolitan city, which is one of the most dynamic and beautiful cities in Korea.



Program

Period: July 30, 2012 – August 17, 2012 [3 weeks]

Participants: International Students currently enrolled at a university

Language of Instruction: English

Course Information Students can expect outstanding teaching standards delivered in a warm and welcoming environment. Programs are designed to be interactive, stimulating and fun. Teaching involves a combination of lectures, classroom learning, self directed study and practical field trips.

		Track A	Track B
Common Course	A1	Korean Language	Intensive Korean Language Program
	A2	Introduction to Korea and Its Culture [English] Introduction to Korea and Its Culture [Japanese]	
Elective Course	B1	East Asian Politics and International Relations	
	B2	Korean Society and Politics in the Films	
	B3	Introduction to the Korean Economy and Business	
	B4	Advanced Korean	
	B5	Intercultural Communication	
	B6	Modern Technologies for the Future	

- * Students enrolled in the Track A program will take 2 common courses and 1 elective course. 2 academic credits will be given for each course except the Korean Language class (1 credit).
- * Intensive Korean Language Program (Track B) consists of 84 hours of classroom learning with some field trips.
- * Classes with less than 15 students may be cancelled.
- * The above courses are subject to change without prior notice.

"The summer school was a great experience for me. We were given chances to discover various aspects of Korea and its people. All the lectures were taught by highly competent teachers but the most interesting thing for me was how enthusiastic they were to share their experience and passionate vision" –Arnaud Grenie, a student from Paris Val de Seine School of Architecture, France



Application

Please apply online at <http://summer.inha.ac.kr>

April 8 (Sun)	Online Application Deadline	July 29 (Sun)	Arrival Day
May 8 (Tue)	Payment Deadline	July 30 (Mon)	Summer School Starts
April 30 (Mon) ~ May 4 (Fri)	Course Registration	August 17 (Fri)	Summer School Ends
June 1 (Fri)	Cancellation Deadline	August 18 (Sat)	Departure

- * Application will be cancelled if payment is not made by the payment deadline.
- * Registration cancellations received prior to the cancellation deadline may be eligible to receive a 50% refund. Cancellations received after the stated deadline will not be eligible for a refund.
- * Invitation letters will be sent out after the cancellation deadline.

Accommodation

Participants will reside in campus residential halls which are conveniently located within walking distance. Each room houses four students and students can use all the facilities including computer rooms, laundry facilities, shared kitchen and gyms and etc. There are also many restaurants and supermarkets nearby for students.



Practical Field Trips

Over the course of the three weeks, students will go on field trips specific to the subject they are studying. For example, students who study business may visit the headquarters of multinational corporations while students taking Korean culture class may visit the National Folk Museums or the Museum of Immigration History. All of these field trips will be great complements to the class room learning.

Fees and Scholarship Opportunities

Fees

Program	Track A	Track B
Fees	USD 550	USD 1,000

- * Tuition, accommodation, part of the meals (Breakfast and Dinner during weekdays), social programs and field trips are all included. Since the summer school program is financially supported by the university, the program is very affordable and great value for money.
- * Please visit our summer school website for scholarship opportunities and payment method.

